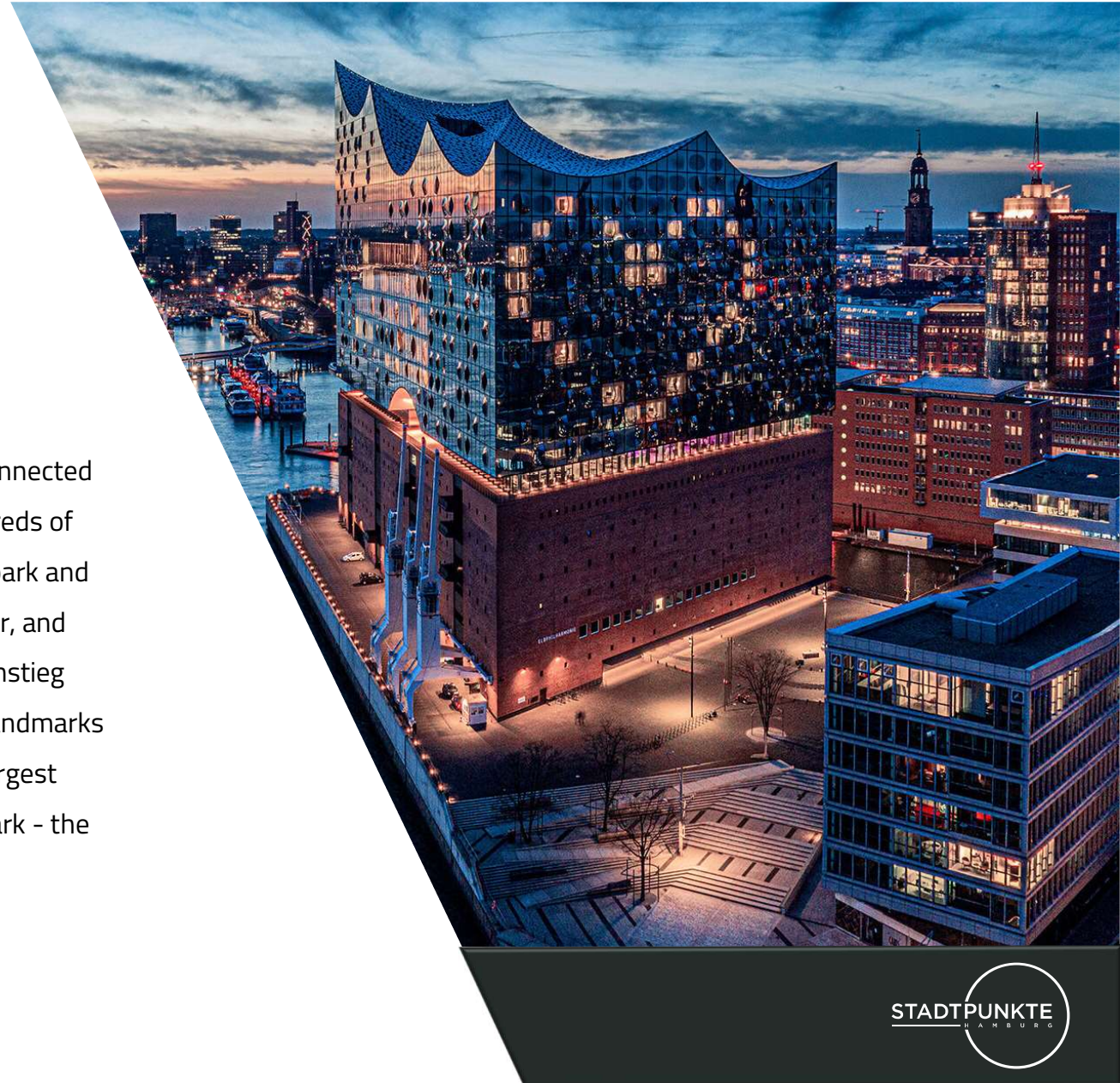




CLIMMAR CONGRESS 2024

Welcome in Hamburg!

Hamburg is an important port city in the north of Germany, connected to the North Sea via the Elbe. The city is crisscrossed by hundreds of canals, some of which are called Fleete. It also has extensive park and green areas. Boats sail on the Binnenalster near the city center, and numerous cafés are located around the reservoir. The Jungfernstieg connects the new town with the old town, which is home to landmarks such as the St. Michael's church from the 18th century. The largest construction project, HafenCity, is home to Hamburg's landmark - the Elbphilharmonie, which opened in 2017.





Hamburg

Climmar Congress 2024

Tue 22.10.2024

Arrivals
Meetings
Welcome Dinner

Wed 23.10.2024

Congress | Partner Program
Gala Dinner

Thu 24.10.2024

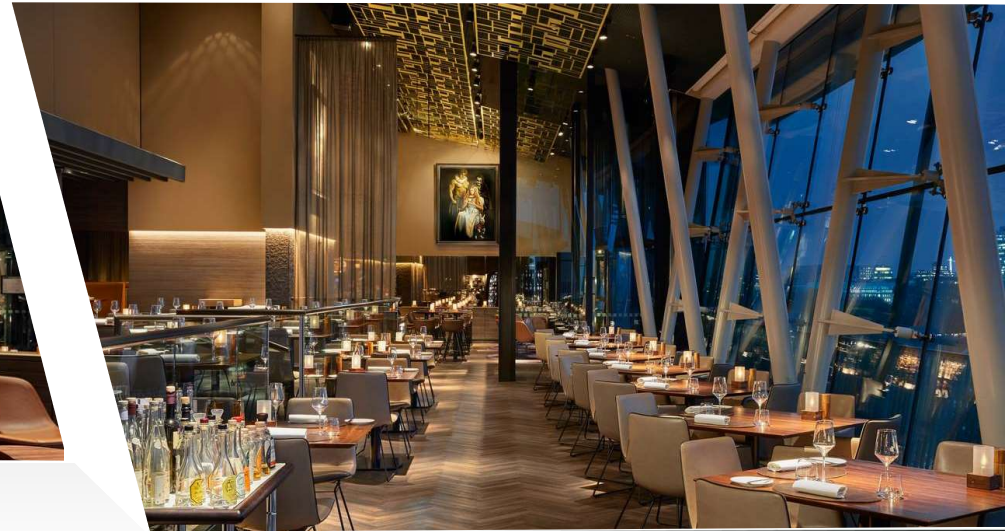
Hamburg Spezial
Closing Dinner





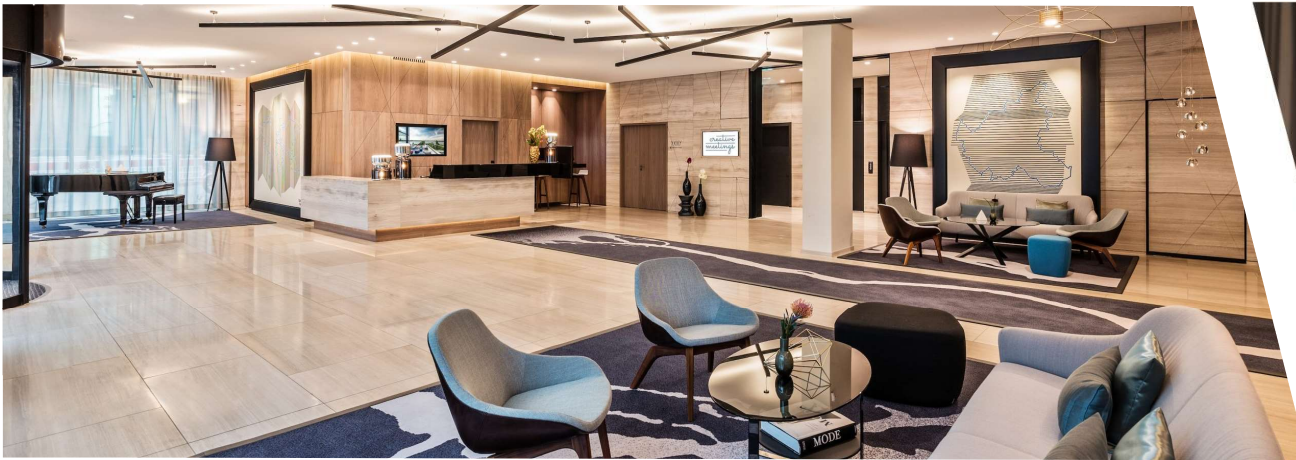
Hotel | Le Méridien

Close to Alster



Hotelbar Heritage

22.10.2024 | Welcome Dinner



Congress Center Hotel Le Meridien

23.10.2024



Partner program |

23.10.2024

Szeneviertel Eppendorf | Pralinen | Lunch | Private Shopping in einer „in“ Boutique



Partner Program Alternative

23.10.2024

Villenviertel Blankenese | Iconic Eiskeller | Teatime im 5 Sterne Hotel | Oldtimerbus



Gala-Dinner | International Maritimes Museum

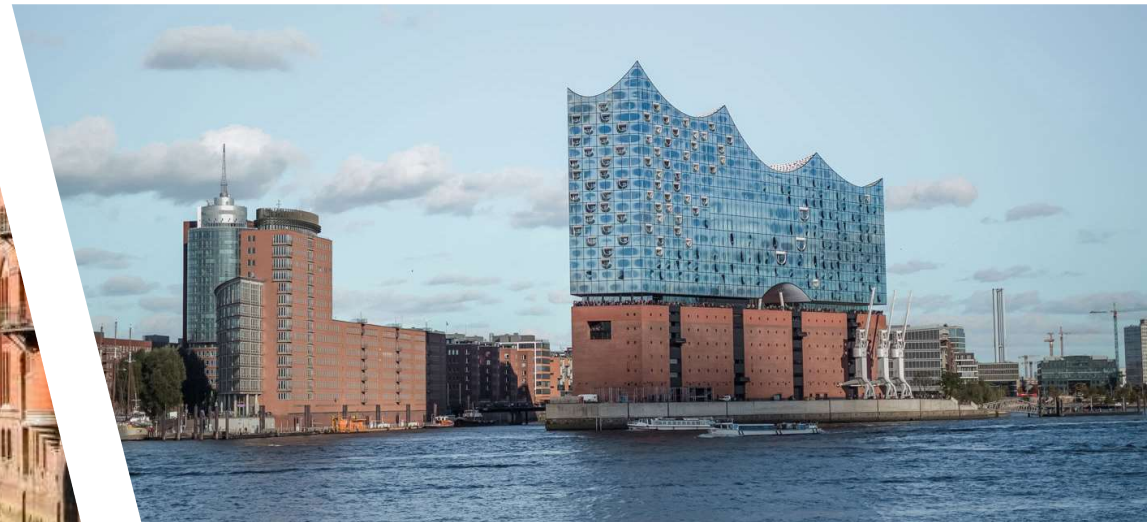
23.10.2024



Thursday Program | Variante 1

24.10.2024

Orgelkonzert St. Michaelis | historischer Spaziergang | Exklusive Hafentrundfahrt | Barkasse



Thursday Programm | Variante

2.10.2024

Weltkulturerbe Speicherstadt | Elbphilharmonie Plaza | Exkl. Hafenrundfahrt | Bummel Alter Elbtunnel



Closing Dinner (Elbe)

24.10.2024 | Closing-Dinner